

CREATING A CULTURE OF TRANSFER STUDENT SUCCESS

PARTNERS IN EXCELLENCE

2024

**INCREASE ACCESS TO OPPORTUNITIES
AT YOUR INSTITUTION**



PHI THETA KAPPA
HONOR SOCIETY

EXPAND YOUR TRANSFER INQUIRY POOL



MEET OUR TEAM

Director's Spotlight

When I transitioned out of college coaching and into the role of a university transfer recruiter, I quickly discovered that my predecessor had not left much behind. The desk was empty except for a copy of this publication, *Partners in Excellence*. As a new transfer admission counselor with little experience to draw upon, the tools that I discovered in this publication became my (literal) guide to success. I emailed the College Relations team, drove a few hours to PTK Headquarters in Jackson, Mississippi, and then, devised my strategic transfer recruitment plan. Phase 1 paired a PTK Connect subscription with exhibiting at the largest community college transfer fair at my first PTK Catalyst annual convention, Phase 2 involved earmarking scholarships exclusively for PTK members, and Phase 3 included my university hosting the PTK Regional Convention for all members and advisors throughout Mississippi and Louisiana. **After spearheading a PTK partnership, each year for three years straight, the university yielded its highest enrollment of degree-seeking transfer students in over a decade.** When the opportunity to work for PTK arose, I shared the news with my supervisor and mentor who, referring to the *Partners in Excellence* publication, told me, "One day, your picture will be in that book."

Today, I combine those experiences and the resources available through Phi Theta Kappa to help admission professionals like you expand their transfer inquiry pool, increase access to opportunities for high-performing students, and build a recruitment strategy that meets their needs. Together, our College Relations team brings over 40 years of experience in the field to help you achieve your recruitment goals as a PTK Partner in Excellence. As a non-profit organization, our mission of college access and student success is central to our work; and as a true partner, we intentionally create opportunities for your professional development along the way.

We offer more than a list of prospect names, we provide individualized support from professionals who have been in your shoes. Whether you're a seasoned veteran or new to the profession, we are motivated to serve you no matter the size of your budget. Learn more by visiting our new website recruitptk.org or contact us individually. On behalf of our organization and the College Relations team, we would deeply value and appreciate your institution's prioritization and thoughtful inclusion of PTK members in your transfer recruitment efforts.

Heather Yush



Heather Yush
Senior Director of
College Relations
heather.yush@ptk.org
601.984.3647



Paul Singh
Associate Director of
College Relations
paul.singh@ptk.org
601.984.3516



Emily Gora
College Relations
Coordinator
emily.gora@ptk.org
601.714.1256



Christy Griffith
College Relations and
Scholarship Support Specialist
christy.griffith@ptk.org
601.984.3562

We are here to help. Find us at recruitptk.org.

ABOUT PTK

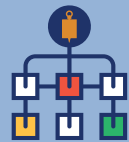
What is Phi Theta Kappa?

Phi Theta Kappa is the first honor society recognizing the academic achievement of community college students and helping them to grow as scholars and leaders.

Today our footprint includes:



230,000
active members
annually



1,250
chapters



50
U.S. states



28
regions



4
divisions



11
countries



4.3M
total members
and growing



100+
years of honoring high
achievers

Who do we serve?

PTK members are high-achieving, community college honor students who demonstrate a commitment to leadership, scholarship, service, and fellowship. They are the type of scholarship-eligible changemakers you should prioritize in your transfer recruitment efforts. Contact our team at collegerelations@ptk.org, and we'll show you how.



3.6
average GPA



91%
student success rate
(completion or transfer)



27
average age



38%
first-generation
college students



41%
Pell Grant
recipients



PHI THETA KAPPA
HONOR SOCIETY

STUDENT SUCCESS PROFILE

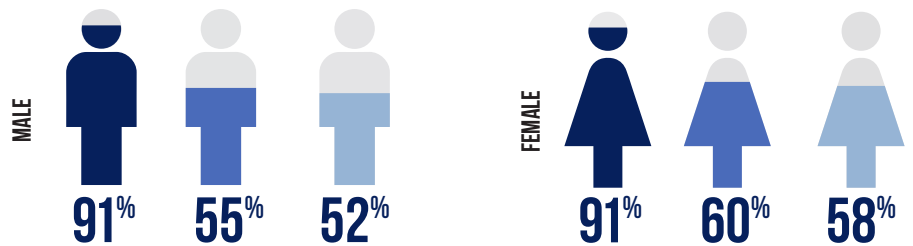
Success Rate, for all three groups, represents the percent of students completion of a degree of any kind, added to the percent of students still enrolled and persisting at the end of six years.

- Students who are members of Phi Theta Kappa Honor Society.
- Students with a GPA of 3.5 or higher within their first year at community college.
- Students who begin their education at a community college.

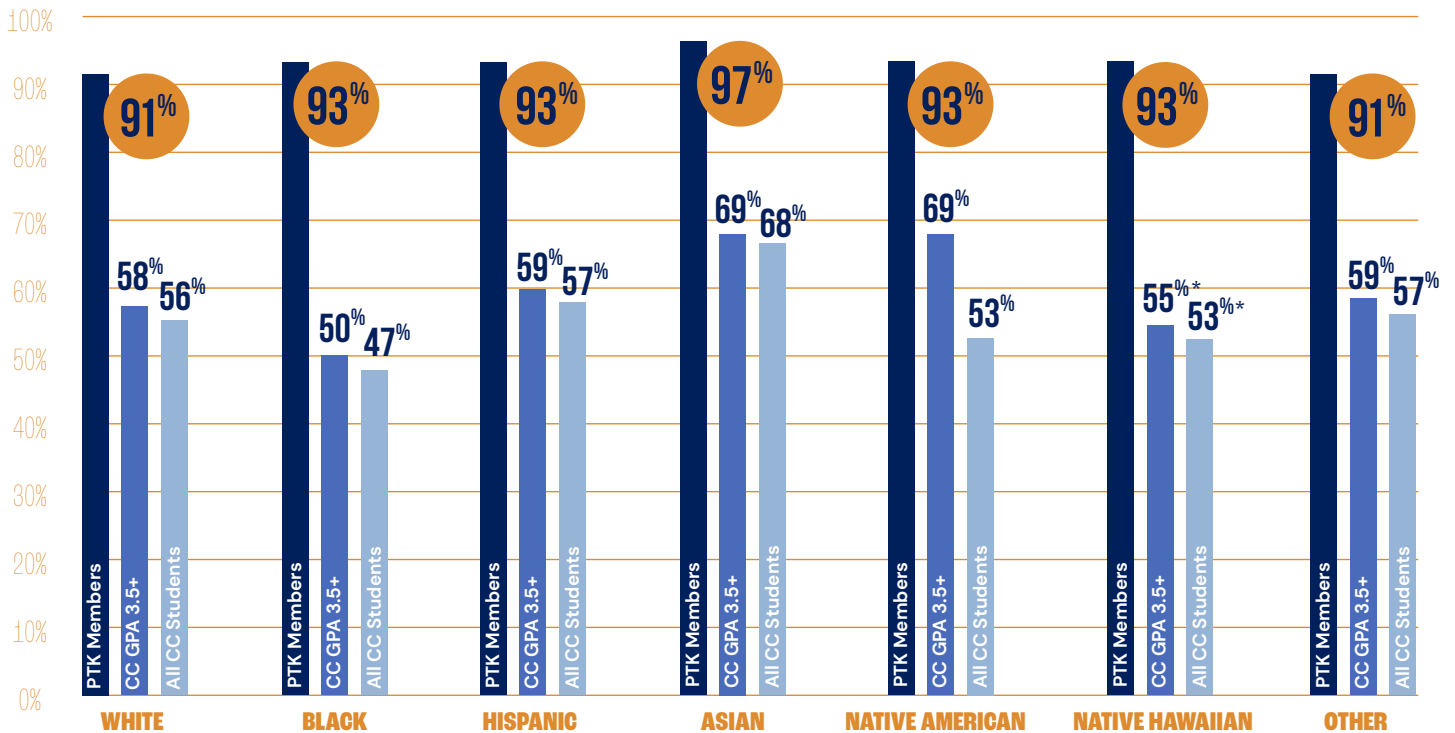
BY PELL GRANT



BY GENDER



BY ETHNICITY



* Sample sizes were not adequate to interpret at the +5% error rate.

TOTAL SUCCESS RATE



Source: National Student Clearinghouse Degree Completion/Transfer Verification. National Student Clearinghouse Current Term Enrollment Report. U.S. Department of Education, National Center for Education Statistics, 2012/17 Beginning Postsecondary Students Longitudinal Study (BPS:12/17). Note: Phi Theta Kappa membership data based on cohort analysis for 2013-2017. Phi Theta Kappa data regarding Pell and non-Pell based on cohort analysis for 2000-2010 to achieve valid sample sizes. Please email any questions or inquiries to institutional.research@ptk.org.

Why partner with PTK?

When you partner with Phi Theta Kappa, you go beyond lead generation. You increase access to opportunities at your institution for transfer-bound students. Plus, the partnership expands and diversifies your transfer inquiry pool. Take your strategy beyond the standard list of student names by exploring these additional opportunities.



ENGAGE PTK
CHAPTER
ADVISORS



DIGITAL
BANNER
ADVERTISING



TRANSFER
HONOR ROLL
RECOGNITION



PROMOTE
YOUR TRANSFER
SCHOLARSHIPS



EXHIBIT OR
SPONSOR PTK
CATALYST



VIRTUAL
TRANSFER
FAIRS

How to find transfer-bound PTK prospects?

- Subscribe to PTK Connect! Nearly 200,000 high-achieving, community college prospects are waiting for you to discover them.
- Customize and self-direct searches to identify best-fit prospects, including students who are showing interest in your institution.
- Obtain an ideal target audience to share the perfect recruitment message about your PTK and/or transfer scholarships!

What data is included in a PTK Connect export file?

- Contact information
- Academic (current college, GPA, major, expected graduation date)
- Demographics
- Behavioral (viewing or favoriting your institution's profile or scholarships)
- Roles in PTK (member, officer)
- Interests (online, graduate school, international)

What's new for PTK Connect?



GEORECRUITING UNLEASHED

Find students in a 0-200 mile radius from any hotspot. Reach a diverse audience of off-campus, dual-enrolled, parenting or adult students, and more.



NEW DATA FIELDS

Discover dual-enrolled prospects, those seeking online or international transfer options, and those considering graduate school.



THE POWER OF STUDENT SEARCH

Expand your transfer inquiry pool with fully customized searches to find best-fit prospects and instantly download data-rich export files.



"HANDRAISER" ACTIVITY

Monitor interest of students who favorite your institutional scholarships in addition to your institutional profile on PTK Connect.

How to appeal to PTK Members?

Scholarships are a powerful recruitment tool and form of recognition. Incentivize students who are looking for an institution that prioritizes their PTK membership. Feature your scholarships in PTK Connect for increased visibility. PTK Scholarships funded by institutions will automatically display on the PTK Scholarship Map, which garnered an impressive 500K+ views in its first 8 months.



879

scholarships available exclusively to PTK members

These scholarships are available from



700+
partner institutions



\$4,948

average amount of scholarship a PTK transfer student receives

Scholarships range from



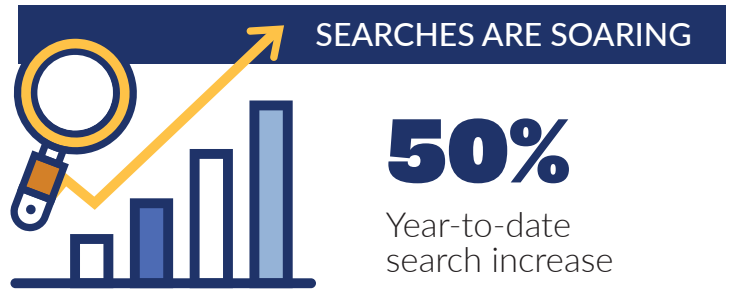
\$250 to \$35K

PTK Connect by the Numbers

PTK members are relying heavily on PTK Connect to plan their transfer!

Becoming a PTK Connect subscriber can give you the inside track by learning which students are viewing and favoriting your institution's profile and scholarships and what is important to them.

Take a sneak peek at what's currently trending with PTK Connect.



-
- TOP MAJORS/CAREERS:**
- Technology
 - Accounting
 - Business
 - Healthcare
 - Psychology
 - Marketing



90,890

YTD College Searches

PTK CONNECT

Scan the QR code to learn more about reaching this large and diverse pool of recruitment prospects.

114,563

YTD Scholarship Searches



218,602

YTD PTK Connect Searches



TOP 10 COLLEGE FAVORITES

New York University
University of Florida
The University of Texas Austin Campus
Texas A&M College Station
University of California Los Angeles

Boston University
University of California Berkeley
Florida State University
University of South Florida
Cornell University

TOP 10 SCHOLARSHIP FAVORITES:



PTK Transfer Scholarship-Texas A&M University College Station
PTK Transfer Scholarship-Columbia University School of General Studies
Cornell Tradition Fellowships-Cornell University
Frederick Douglass Scholarship-University of Maryland
PTK Scholarship-The University of Texas at Dallas
Martin Achievement Scholarship Program-University of Washington Seattle
Florida College Transfer Academic Scholarship-University of Florida
PTK Scholarship-University of Houston
Maryland Transfer Scholarship-University of Maryland
Comet Transfer Scholarship-The University of Texas at Dallas

PTK PARTNERSHIP

on any budget

We get it. Resources are stretched; budgets are tight; and, now more than ever, colleges are looking for the best return on their investment in transfer recruitment. We hear you! And we are here to help you reach your transfer recruitment goals—no matter the size of your budget.

Free/No Contract

PTK Connect Profile

Upgrade your college's virtual presence and promote your transfer scholarships by enhancing the standard info on your institutional profile.

PTK Transfer Honor Roll

Gain national recognition of your institution's transfer practice and leverage this endorsement to recruit students by completing your college's PTK Connect profile by December 31, 2024.

PTK Scholarship

Attract more students by designating an exclusive scholarship for PTK members.

\$800

In-Person Transfer Fair at PTK Catalyst

Connect with prospects in person as an Exhibitor at the nation's largest transfer fair for community college students.

\$1,000 – \$5,000

PTK Connect Subscription

Get transfer student leads and discover your top prospects.

1,000 names for **\$1,000** 2,000 names for **\$2,000**
3,000 names for **\$3,000** 4,000 names for **\$4,000**

Best Value: Unlimited names for **\$5,000**

\$300 – \$500

Virtual Transfer Fairs

Meet transfer-focused prospects in monthly online transfer events.

\$1,500 – \$3,000

Digital Ads

Stand out with a clickable digital banner ad on PTK Connect.

6 months for **\$1,500** 12 months for **\$3,000**

\$500

PTK Chapter Advisors List

Strengthen your transfer pipeline and broaden recruitment reach locally and nationally by connecting with over 1,200 student influencers.

\$5,000 and up

PTK Catalyst Event Sponsor Packages

Give your visibility a huge boost among the largest gathering of the most sought-after transfer prospects in the nation. See the next page for details.

	Champion	Cultivator	Connector	
College Sponsorship Benefits	\$15,000	\$10,000	\$5,000	\$800
	Colleges sponsoring at the Champion and Cultivator Level must be subscribed to PTK Connect and/or offer a PTK Scholarship at the time of Catalyst 2025			
# of PTK Catalyst registrations + 25% discount on additional registrations	3	2	2	1
Name recognition/logo as sponsor for a General Session with opportunity for 3 min participation during session (speak/video/combo) • Inclusion in General Session pre-roll	●			
Exhibit space in Opportunity Expo for duration of Catalyst (Thursday morning to Saturday afternoon) • 18+ hours of networking and recruiting time	10' x 10' booth	6' table	6' table	
6' table at College Transfer Fairs on Friday and Saturday (2 hours each)	●	●	●	●
Sponsor profile page on event app for duration of event	●	●		
Post PTK Catalyst attendee list	●	●		
Name and logo included on branded signage at Catalyst	●	●		
Logo displayed on Sponsor Page of PTK Catalyst website and event app	●	●	●	Name on Catalyst website and event app
Social media component DURING Catalyst: 15-second Instagram story shared via PTK Instagram, including link option	Shared 1x	Shared 1x		
A 15-30 second sponsor-created promotional video appearing on hotel promotional channel in 1,300+ hotel rooms	●			
Opportunity to attend the Transfer Recruiter Training Seminars and Networking Social	●	●	●	●

Add-on Benefits

Select one opportunity from this level or lower	Select one opportunity from this level or lower	Select one opportunity from below
Co-Branded PTK Registration Bag Sponsor 1 available \$5,000 <small>Note: After 12/31/2024, price increases to \$7,500</small>	Co-Branded PTK Store Bags 1 available \$5,000	Co-Branded PTK Water Bottle for all in-person attendees 1 available \$5,000 <small>Note: After 12/31/2024, price increases to \$7,500</small>
Co-Branded PTK Lanyard Sponsor 1 available \$5,000 <small>Note: After 12/31/2024, price increases to \$7,500</small>		
Branded Item or Printed Material for all in-person attendees 5 available \$3,000 <small>Institution will provide approximately 3,000</small>		
Advisor Breakfast Sponsorship (speaking/table opportunity) 1 available \$10,000		

Join us at



Phi Theta Kappa
Catalyst 25

April 3-5
Kansas City, Missouri

PTK Catalyst is the best place to connect with potential transfer students, as well as networking and professional development for transfer recruitment professionals like you!

2024 PARTNERS IN EXCELLENCE

A Partner in Excellence is a four-year institution that actively recruits transfer-bound PTK members in at least one of the following ways: subscribes to PTK Connect, offers a designated PTK Scholarship, exhibits or sponsors at PTK Catalyst annual convention, participates in PTK Virtual Transfer Fairs, recognized on PTK Transfer Honor Roll. Contact collegerelations@ptk.org or visit recruitptk.org to become a Partner in Excellence.

**denotes 2024 PTK Transfer Honor Roll Winner*

Online

American Public University System
Columbia Southern University
Drexel University Online
Embry-Riddle Aeronautical University - Worldwide
National University
*Ohio University - OHIO Online
Southern New Hampshire University
*The University of Arizona Global Campus
*Tulane University School of Professional Advancement
University of Florida Online
University of Maryland Global Campus
University of Pennsylvania - Penn LPS
*Washington State University Global Campus
*Western Governors University

International

Franklin University Switzerland
Richmond American University London

Alabama

*Athens State University
Auburn University
Auburn University at Montgomery
Huntingdon College
Jacksonville State University
Samford University
*Spring Hill College
Talladega College
The University of Alabama
The University of Alabama at Birmingham
Troy University
University of Montevallo
University of North Alabama
University of South Alabama

Alaska

University of Alaska – Fairbanks

Arizona

*Arizona State University
Benedictine University Mesa
Embry-Riddle Aeronautical University - Prescott
Grand Canyon University
*Northern Arizona University
*Prescott College
University of Arizona

Arkansas

Arkansas Tech University
Hendrix College
Lyon College
Ouachita Baptist University
Philander Smith University
University of Arkansas - Fort Smith
University of Arkansas - Fayetteville
University of the Ozarks
Williams Baptist College

California

Antioch University Los Angeles
*Antioch University Santa Barbara
California Baptist University
California Lutheran University
California State University Maritime Academy
Chapman University
Concordia University Irvine
Dominican University of California
*Loyola Marymount University
Menlo College
*Mount Saint Mary's University Los Angeles
Notre Dame de Namur University
*Palo Alto University
Pepperdine University
Pomona College
*Saint Mary's College of California
San Francisco State University
San Jose State University
Santa Clara University
University of La Verne
University of Redlands
University of San Diego
*University of San Francisco

Colorado

Colorado Mesa University
Colorado School of Mines
Colorado State University
Colorado State University Pueblo
*Metropolitan State University of Denver
Regis University
University of Colorado - Colorado Springs
*University of Colorado - Boulder
*University of Colorado - Denver
University of Denver
University of Northern Colorado
Western Colorado University

Connecticut

Albertus Magnus College
Eastern Connecticut State University
Mitchell College
Quinnipiac University
Sacred Heart University
Trinity College
University of Hartford
*University of New Haven
University of Saint Joseph
Wesleyan University
Yale University Eli Whitney Student Program

Delaware

Goldey-Beacom College
University of Delaware
Widener University
*Wilmington University

District of Columbia

American University
Catholic University of America
Corcoran College of Art and Design
George Washington University
*Georgetown University School of Continuing Studies
The Catholic University of America
Trinity Washington University

Florida

*Barry University
Bethune-Cookman University
*Eckerd College
Edward Waters University
Embry-Riddle Aeronautical University - Daytona Beach
Florida A&M University
Florida Atlantic University
Florida College
Florida Institute of Technology
*Florida International University
Florida Polytechnic University
*Florida Southern College
Florida State University
Florida State University Panama City
Jacksonville University
Lynn University
New College of Florida
Northeastern University Miami
*Nova Southeastern University
Palm Beach Atlantic University
*Rollins College
Saint Leo University
Schiller International University
Southeastern University
St. Thomas University
Stetson University
*The University of Tampa
University of Central Florida
University of Florida
University of South Florida
University of South Florida - Sarasota
University of Tampa
University of West Florida

Georgia

Agnes Scott College
Berry College
Brewton-Parker College
Fort Valley State University
Georgia College & State University
*Georgia Southern University
Kennesaw State University
LaGrange College
Mercer University
*Oglethorpe University
Savannah College of Art and Design

(Georgia cont.)

Shorter University
University of West Georgia
Young Harris College

Hawaii

Chaminade University of Honolulu
Hawaii Pacific University

Idaho

Boise State University
Idaho State University
Northwest Nazarene University
The College of Idaho
University of Idaho

Illinois

Augustana College
Aurora University
Benedictine University
*Blackburn College
*Bradley University
Chicago State University
Columbia College Chicago
Concordia University Chicago
*DePaul University
Dominican University
*Eastern Illinois University
*Elmhurst University
Governors State University
*Greenville University
*Illinois College
*Illinois Institute of Technology
*Illinois State University
Illinois Wesleyan University
Knox College
*Lake Forest College
Lakeview College of Nursing
Lewis University
*Loyola University Chicago
McKendree University
*Millikin University
*Monmouth College
National Louis University
National University of Health Sciences
*North Central College
North Park University
Northeastern Illinois University
Northern Illinois University
Northwestern University
Olivet Nazarene University
Quincy University
Rockford University
Roosevelt University
Rush University
*Saint Xavier University
*School of the Art Institute of Chicago
*Southern Illinois University Carbondale
Southern Illinois University Edwardsville
*Trinity Christian College
Trinity International University
University of Illinois at Chicago
University of Illinois Springfield
*University of Illinois Urbana-Champaign
University of St Francis
*Western Illinois University
Wheaton College

Indiana

Anderson University
Ball State University
Butler University
Earlham College
Franklin College
Goshen College
Hanover College

Holy Cross College
Indiana Institute of Technology
Indiana State University
Indiana University Bloomington
Indiana University Kokomo
Indiana Wesleyan University
Manchester University
Marian University
Purdue University Fort Wayne
Saint Joseph's College
Saint Mary-of-the-Woods College
Saint Mary's College
Taylor University
*Trine University
*University of Evansville
University of Indianapolis
University of Saint Francis
*Valparaiso University

Iowa

*Buena Vista University
Central College
*Clarke University
Coe College
*Cornell College
*Drake University
Graceland University
*Grand View University
*Iowa State University
Morningside College
Mount Mercy University
*Simpson College
St. Ambrose University
University of Dubuque
*University of Iowa
*University of Northern Iowa
Upper Iowa University
Waldorf University
Wartburg College
William Penn University

Kansas

Baker University
Benedictine College
Bethany College
Bethel College
Emporia State University
Fort Hays State University
*Friends University
*Kansas State University
Kansas Wesleyan University
McPherson College
MidAmerica Nazarene University
*Newman University
Ottawa University
Pittsburg State University
Southwestern College
Sterling College
*Tabor College
*University of Kansas
University of Saint Mary
Washburn University
*Wichita State University

Kentucky

Bellarmino University
*Eastern Kentucky University
Georgetown College
Lindsey Wilson College
Midway University
Morehead State University
Murray State University
University of Kentucky
*University of Louisville
University of Pikeville
*Western Kentucky University



“Thomas Edison State University has seen great results from engaging with prospective PTK students who are looking at transfer opportunities! We offer PTK-specific scholarships for both undergraduate and graduate students. Also, utilizing the PTK Connect database has provided a wealth of prospective connections with students based on parameters established to reflect the demographics and location of students who would be a good fit for TESU.

“We also engage nationally with PTK chapter leaders and advisors within the community college network on a national scale and provide them with targeted information that they can use to assist their students in learning about TESU’s benefits.

“Schools should also take advantage of the numerous online virtual transfer fairs and in-person PTK events, and prospective student webinars to begin building relationships with this segment of high-achieving PTK community college students.”

Juliette Punchello

*Senior Director of Graduate
Recruitment and Enrollment Services
Thomas Edison State University
Online University*



“Attending PTK Catalyst 2024 influenced me in a tremendous way. Talking with all the different reps for the colleges at the College Transfer Fair really opened my eyes to how many options there are outside of my state. Listening to them speak about the benefits of attending their college was incredibly helpful and in a few cases influenced me to keep them as top options for me to possibly transfer to for my bachelor’s degree.”

“I also attended a couple of virtual transfer fairs, one being right before Catalyst. That one helped me to make sure I kept an eye out for the colleges that were in attendance, so I could speak to a representative in person and get a better feel for the college and its offerings.”

“PTK Connect has been an extremely vital tool for me. Being able to filter schools by scholarships offered, tuition costs, and even state has been more helpful than I could have imagined. I’ve been on the PTK site at least once a week to help me dwindle down the colleges on my list to apply for.”

Loretta Harris

*Student and PTK Chapter President
Porterville Community College
California*

Louisiana

Centenary College
Dillard University
Louisiana Christian University
Louisiana State University
Louisiana Tech University
*Loyola University New Orleans
Northwestern State University of Louisiana
Southeastern Louisiana University
Southern University and A & M College
Southern University at New Orleans
University of Louisiana at Monroe
University of New Orleans
Xavier University of Louisiana

Maine

College of the Atlantic
Husson University
St. Joseph’s College of Maine
University of Maine - Presque Isle
University of Maine - Fort Kent
*University of Maine - Farmington
*University of Maine in Orono

Maryland

Capitol Technology University
Frostburg State University
Goucher College
*Hood College
Johns Hopkins University
*Loyola University Maryland
Maryland Institute College of Art
*McDaniel College
*Mount St. Mary’s University Emmitsburg
*Notre Dame of Maryland University
Salisbury University
St. Mary’s College of Maryland
*Stevenson University
*University of Baltimore
University of Maryland - Baltimore County
University of Maryland - Eastern Shore
Washington College

Massachusetts

*Anna Maria College
Assumption University
*Bay Path University
*Bentley University
Boston College
Woods College of Advancing Studies
Boston University
Boston University Metropolitan College
Clark University
Dean College
Eastern Nazarene College
Elms College
*Emmanuel College
*Emerson College
*Hampshire College
Harvard Extension School
Hult International Business School
Lasell University
*Lesley University
Massachusetts College of Liberal Arts
Massachusetts College of Pharmacy and Health Sciences
*Merrimack College
Morgan State University
Mount Holyoke College
Northeastern University
Northeastern University Bouvé College of Health Sciences
Regis College
*Simmons University
Smith College
*Springfield College
*Suffolk University

University of Massachusetts - Dartmouth
*University of Massachusetts Lowell
Wentworth Institute of Technology
Western New England University
Wheaton College
Williams College
*Worcester Polytechnic Institute

Michigan

*Albion College
*Alma College
Central Michigan University
Cleary University
*College for Creative Studies
Cornerstone University
Davenport University
Eastern Michigan University
Ferris State University
Grand Valley State University
Kettering University
Lake Superior State University
Lawrence Technological University
Madonna University
Michigan State University
*Northern Michigan University
*Oakland University
Rochester Christian University
Siena Heights University
The University of Olivet
University of Detroit Mercy
University of Michigan - Dearborn
University of Michigan Marsal Family School of Education
University of Michigan College of Literature, Science, and the Arts
University of Michigan - Flint
Walsh College
*Wayne State University
Western Michigan University

Minnesota

*Augsburg University
College of Saint Benedict
College of St. Scholastica
Concordia College
*Concordia University St. Paul
Gustavus Adolphus College
*Hamline University
Mayo Clinic School of Health Sciences
*Metro State University St. Paul
Minnesota State University Mankato
Minnesota State University Moorhead
North Central University
Saint John’s University
Saint Mary’s University of Minnesota
Southwest Minnesota State University
St. Catherine University
*St. Cloud State University
*University of Minnesota Morris
University of St. Thomas at St Paul
Winona State University

Mississippi

Alcorn State University
*Belhaven University
*Blue Mountain Christian University
Delta State University
Jackson State University
*Millsaps College
Mississippi College
*Mississippi State University
Mississippi State University - College of Ag & Life Sciences
Mississippi State University - College of Business
Mississippi State University - College of Forest Resources
Mississippi University for Women

(Mississippi cont.)

The University of Mississippi (Ole Miss)
Tougaloo College
*University of Mississippi
*The University of Southern Mississippi
*William Carey University

Missouri

Avila University
Central Methodist University
Cottey College
Culver-Stockton College
Drury University
Fontbonne University
Harris-Stowe State University
*Lindenwood University
Maryville University of Saint Louis
Missouri Baptist University
Missouri Southern State University
Missouri State University - West Plains
Missouri State University
*Missouri University of Science and Technology
Northwest Missouri State University
Park University
*Rockhurst University
Saint Louis University
*Southeast Missouri State University
Southwest Baptist University
Stephens College
Truman State University
University of Central Missouri
*University of Missouri - Columbia
University of Missouri - Kansas City
University of Missouri - St. Louis
University of Missouri (College of Engineering and College of Business)
Washington University of St. Louis School of Continuing & Professional Studies
*Webster University
Westminster College
William Jewell College
William Woods University

Montana

*Carroll College

Nebraska

*Bellevue University
Chadron State College
College of Saint Mary
Concordia University
Doane University
Hastings College
Midland University
Nebraska Methodist College
*Nebraska Wesleyan University
*Peru State College
University of Nebraska at Kearney
University of Nebraska - Lincoln
Wayne State College

Nevada

University of Nevada-Las Vegas

New Hampshire

Plymouth State University
Rivier University
University of New Hampshire

New Jersey

Bloomfield College of Montclair State University
*Caldwell University
Centenary University
Drew University
Fairleigh Dickinson University
Felician University

*Georgian Court University
*Kean University
Monmouth University
Montclair State University
New Jersey Institute of Technology
Princeton University
*Rider University
*Rowan University
Rutgers University - New Brunswick
*Rutgers University - Newark
Saint Elizabeth University
*Saint Peter's University
Seton Hall University
Stevens Institute of Technology
*Stockton University
*The College of New Jersey
*Thomas Edison State University
William Paterson University of New Jersey

New Mexico

Eastern New Mexico University
New Mexico Institute of Mining and Technology
New Mexico State University
University of New Mexico

New York

*Adelphi University
Albany College of Pharmacy
Alfred University
Berkeley College
*Binghamton University
*Canisius University
Clarkson University
College of Mount Saint Vincent
Columbia University School of General Studies
Cornell University
Daemen University
*Elmira College
Excelsior College
Fordham University
Hartwick College
Hilbert College
Hobart and William Smith Colleges
Hofstra University
*Hunter College - CUNY
*Iona College
Ithaca College
John Jay College of Criminal Justice
Keuka College
*Le Moyne College
*LIM College
*Long Island University Post
Manhattan College
Manhattanville College
Marist College
Marymount Manhattan College
Mercy College
Molloy College
Morrisville State College
Mount Saint Mary College
Nazareth University
New York City College of Technology
*New York Institute of Technology
New York University
New York University School of Professional Studies
*Niagara University
Pace University
Paul Smith's College
*Rensselaer Polytechnic Institute
Roberts Wesleyan College
Rochester Institute of Technology
*Russell Sage College
Saint Bonaventure University
Saint Francis College
Sarah Lawrence College
Siena College



"While serving as the Iowa Regional President, I met a member of the St. Ambrose University admission team, Brandy. She took the time to ask me what I was looking for in a school and if I had considered transferring to St. Ambrose. She informed me that all people are welcome at their school and told me about several scholarships offered by St. Ambrose. These scholarships included PTK transfer scholarships, St. Ambrose advantage scholarship, academic scholarships, and more.

"Brandy invited me to campus to talk about my options. After visiting the campus, looking into the programs, scholarships, and talking to St. Ambrose alumnus; I knew that St. Ambrose was the school for me. Now in my first semester at St. Ambrose, I am proud to share that between all my scholarships and grants I am attending St. Ambrose tuition free!"

**Bradley
Theissen-Cooper**
Student and PTK
Regional President
Scott Community College
Iowa



"We are in our second year of partnering with Phi Theta Kappa on transfer recruitment. The data we get from PTK Connect allows us to reach out and introduce ourselves to potential students early. By doing so, when we meet students in person at PTK's regional meetings, they already know about us. This has effectively opened the door to say, now that you know about us, here's what we can do for you."

"UBALT is different by design. We are very concentrated on students' majors, and we find that PTK students are a good fit for us because they are typically already very focused on their educational opportunities."

"To promote community among PTK members, we establish the only PTK alumni association in this area. It's grown from just a handful of members to now over 130. As a result, we discovered that many of our faculty and staff are PTK members, which gives us an extra endorsement with PTK members."

Amadou Bah

*Admission Counselor and
PTK Advisor
The University of Baltimore
Maryland*

(New York cont.)

St. Francis College
*St. John Fisher University
*St. John's University
St. Joseph's University
St. Lawrence University
St. Thomas Aquinas College
SUNY Buffalo State University
SUNY Canton
SUNY Cobleskill
SUNY College at Oneonta
SUNY College of Environmental Science
SUNY College of Technology at Alfred
SUNY College of Technology at Delhi
*SUNY Cortland
*SUNY Geneseo
SUNY Morrisville
*SUNY Polytechnic Institute
Syracuse University School of Professional Studies
The College of Westchester
The New School
Touro College of Pharmacy
*Trocaire College
University at Buffalo
University of Rochester
*Utica University
Vassar College
Vaughn College of Aeronautics and Technology
*Wagner College
Wells College

North Carolina

*Appalachian State University
*Barton College
Belmont Abbey College
Campbell University
Catawba College
Gardner-Webb University
Guilford College
High Point University
Johnson C. Smith University
*Lees-McRae College
*Lenoir-Rhyne University
Meredith College
North Carolina A&T State University
North Carolina State University
*North Carolina Wesleyan University
Queens University of Charlotte
Salem College
St. Andrews University
University of North Carolina Greensboro
University of North Carolina Wilmington
Warren Wilson College
William Peace University
Wingate University

North Dakota

Dickinson State University
*North Dakota State University
University of Jamestown
University of Mary
University of North Dakota
Valley City State University

Ohio

Antioch College
Ashland University
*Baldwin Wallace University
Bluffton University
Case Western Reserve University
*Cleveland State University
Defiance College
Franciscan University
Franklin University
Heidelberg University
*Hiram College
John Carroll University

Kent State University
Lake Erie College
Lourdes University
Malone University
Miami University
*Mount St. Joseph University
Mount Vernon Nazarene University
Muskingum University
Ohio Christian University
*Ohio Dominican University
*Ohio University
Ohio Wesleyan University
Tiffin University
University of Akron
University of Cincinnati
University of Dayton
*University of Mount Union
University of Rio Grande
University of Toledo
*Ursuline College
Walsh University
*Wilmington College
Wittenberg University
Xavier University

Oklahoma

East Central University
*Northeastern State University
Oklahoma Baptist University
Oklahoma City University
Oklahoma Panhandle State University
Oklahoma State University
Oral Roberts University
Rogers State University
Southeastern Oklahoma State University
Southern Nazarene University
University of Central Oklahoma
University of Oklahoma
University of Science and Arts of Oklahoma
*University of Tulsa

Oregon

Corban University
*Eastern Oregon University
Lewis & Clark College
Linfield University
Oregon Institute of Technology
*Pacific University Oregon
Portland State University
Reed College
University of Portland
Warner Pacific College
Western Oregon University
Willamette University

Pennsylvania

*Allegheny College
Alvernia University
*Arcadia University
Cairn University
Carlow University
Cedar Crest College
*Chatham University
*Chestnut Hill College
Cheyney University of Pennsylvania
*Delaware Valley University
DeSales University
Dickinson College
Drexel University
*Duquesne University
East Stroudsburg University
*Elizabethtown College
Gannon University
Geisinger College of Health Sciences
Geneva College
Gwynedd Mercy University
Harrisburg University

(Pennsylvania cont.)

*Holy Family University
 *Immaculata University
 Juniata College
 Keystone College
 *King's College
 Kutztown University
 La Roche College
 *La Salle University
 *Lebanon Valley College
 Lehigh University
 Lycoming College
 Marywood University
 Mercyhurst University
 Messiah University
 Misericordia University
 Moravian University
 Muhlenberg College
 *Neumann University
 Peirce College
 Penn State University
 Pennsylvania Academy of the Fine Arts
 Pennsylvania College of Health Sciences
 Pennsylvania College of Technology
 Pennsylvania Western University
 Point Park University
 *Robert Morris University
 Rosemont College
 *Saint Joseph's University
 Susquehanna University
 Swarthmore College
 The Pennsylvania State University
 *Thiel College
 Thomas Jefferson University
 University of Pittsburgh
 *University of Pittsburgh at Bradford
 University of Scranton
 *Ursinus College
 Villanova University - College of Professional Studies
 Washington and Jefferson College
 Widener University
 *Wilkes University
 Wilson College
 *York College of Pennsylvania

Rhode Island

*Bryant University
 *Roger Williams University
 Salve Regina University
 University of Rhode Island

South Carolina

Anderson University - SC
 Coastal Carolina University
 Coker University
 *Columbia College (SC)
 Erskine College
 Francis Marion University
 Lander University
 *Newberry College
 Presbyterian College
 South Carolina State University
 *Southern Wesleyan University
 University of South Carolina Aiken
 Winthrop University
 Wofford College

South Dakota

Augustana University
 Dakota Wesleyan University
 Mount Marty College
 University of Sioux Falls
 University of South Dakota

Tennessee

Austin Peay State University

Baptist Health Sciences University
 Belmont University
 Bethel University
 Bryan College
 *Carson-Newman University
 Christian Brothers University
 Cumberland University
 East Tennessee State University
 *Freed-Hardeman University
 King University
 *Lee University
 LeMoyné-Owen College
 Lincoln Memorial University
 *Lipscomb University
 *Maryville College
 Middle Tennessee State University
 Milligan University
 Tennessee Technological University
 Tennessee Wesleyan College
 Trevecca Nazarene University
 Tusculum University
 Union University
 University of Memphis
 University of Tennessee - Knoxville
 University of Tennessee - Martin

Texas

Abilene Christian University
 Angelo State University
 Austin College
 Baylor University
 Concordia University Texas
 *Dallas Baptist University
 *East Texas Baptist University
 Hardin-Simmons University
 Houston Christian University
 Howard Payne University
 Lamar University
 LeTourneau University
 *McMurry University
 Midwestern State University
 Northwood University
 Our Lady of the Lake University
 Paul Quinn College
 Prairie View A&M University
 Schreiner University
 Southern Methodist University
 Southwestern University
 *St. Edward's University
 St. Mary's University
 Tarleton State University
 Texas A & M University Central Texas
 Texas A&M University College Station
 *Texas A&M University-Corpus Christi
 Texas A&M University Galveston
 Texas A & M University Kingsville
 Texas A&M University San Antonio
 Texas Chiropractic College
 Texas Christian University
 *Texas Lutheran University
 Texas State University
 *Texas Tech University
 *Texas Wesleyan University
 Texas Woman's University
 The University of North Texas Health Science Center at Fort Worth
 *The University of Texas at Arlington
 The University of Texas at Dallas
 *The University of Texas Rio Grande Valley
 The University of Texas at San Antonio
 The University of Texas at Tyler
 Trinity University
 University of Dallas
 University of Houston
 University of Mary Hardin-Baylor
 University of North Texas
 University of St. Thomas - Houston

*University of the Incarnate Word
 Wayland Baptist University
 West Texas A&M University

Utah

Westminster University

Vermont

*Champlain College
 Goddard College
 Norwich University
 University of Vermont

Virginia

Averett University
 Bridgewater College
 Christopher Newport University
 Eastern Mennonite University
 Emory & Henry University
 Hollins University
 Liberty University
 Longwood University
 Mary Baldwin University
 Marymount University
 Old Dominion University
 *Radford University
 Randolph College
 *Randolph-Macon College
 Regent University
 *Roanoke College
 Sweet Briar College
 University of Lynchburg
 University of Mary Washington
 University of Virginia School of Continuing & Professional Studies
 Virginia Tech

Washington

*Antioch University Seattle
 Bastyr University
 Central Washington University
 Eastern Washington University
 *Gonzaga University
 Pacific Lutheran University
 Saint Martin's University
 Seattle Pacific University
 *Seattle University
 University of Puget Sound
 University of Washington Bothell
 Western Washington University
 *Whitworth University

West Virginia


Marshall University
 Shepherd University
 West Virginia Wesleyan College
 Wheeling Jesuit University


Wisconsin

Alverno College
 *Beloit College
 Carthage College
 Edgewood College
 Lakeland University
 *Lawrence University
 *Marquette University
 Milwaukee Institute of Art & Design
 Milwaukee School of Engineering
 Mount Mary University
 *Northland College
 Ripon College
 University of Wisconsin - La Crosse
 University of Wisconsin - Stout
 Viterbo University
 Wisconsin Lutheran College



International Headquarters
1625 Eastover Drive
Jackson, MS 39211-6431


PTK CONNECT



Scan the QR Code
above to start
recruiting through
PTK Connect today.



PHI THETA KAPPA
HONOR SOCIETY

1625 Eastover Drive
Jackson, MS 39211
866.286.8453
recruitptk.org

The mission of Phi Theta Kappa is to recognize academic achievement of college students and to provide opportunities for them to grow as scholars and leaders.

Copyright 2024 by Phi Theta Kappa. All Rights Reserved.

Phi Theta Kappa is committed to the elimination of unlawful discrimination in connection with all employment relationships, business operations and programs. Discrimination based on gender, family or marital status, race, color, national origin, military or veteran status, economic status, ethnic background, sexual orientation, gender identity, transgender status, genetic information or history, age, disability, political affiliation, and cultural and religious backgrounds is prohibited.